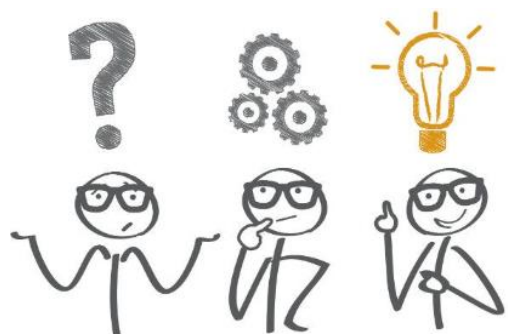


# Enjoy Maths?



## Love to Solve a Problem?

### Able to think outside the box?



A jigsaw has 64 pieces. If joining any two pieces together is counted as one move, what is the fewest number of moves to complete the jigsaw?

Join the Maths Department Problem Solving Club.

Thursday Lunchtime – MA2

Each week we will look at using different skills to solve a wide selection of problems.

You have eight cubes which are identical except in colour. Two are red, two are blue, two are green and two are yellow. In how many different ways can these eight cubes be assembled to make a large cube?

Open to all year groups and abilities.